

TOM and JERRY

MAKE YOUR OWN PUZZLE



Materials

- Cereal Box
- Scissors
- Glue



What To Do



Print the puzzle guide and artwork sheets and cut out.



Next, cut off either the front or back panel of a cereal box. Trim as needed to match the size of the artwork.



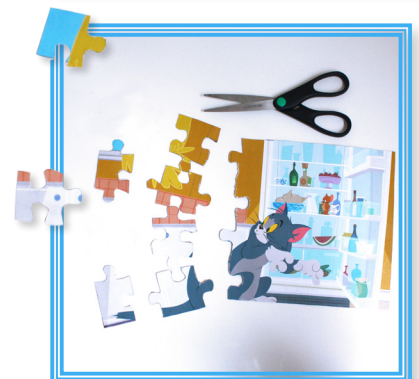
Take the puzzle sheet and glue to one side of the cereal box panel.



Then turn over and glue the artwork sheet to the cereal box panel.



Finally, cut apart the puzzle pieces, using the puzzle sheet on the back as a guide.



What To Do

6 😊

You now have your very own Tom & Jerry puzzle. Print more puzzle sheets and draw your own artwork to make even more fun puzzles!





TM & © Hanna-Barbera (s17) TM & © Warner Bros. Entertainment Inc. (s17)

